



GARAGE DOORS



The Master of Space Saving

ULEPANDA



**Make an extra large space
with safety and convenience**

▼ ULEPANDA SOLUTION

Choosing a suitable garage door should not only consider the installation constraints of the building but also meet the owner's personalized needs for appearance and color. Minimize the space occupied and ensure the product's convenience, stability, and durability.

ULE PANDA has developed two highly adaptable products, the "Rolling Garage Door" and the "Side-Sliding Garage Door," to suit different garage spaces and structures and to provide personalized service for different shapes and sizes. Our door system always runs smoothly, whether you have a shallow floor height or a vast opening. ULE PANDA is dedicated to providing you with professional garage door solutions. We have mature technology, smooth motor operation, convenience and noiselessness, intelligent remote sensing, wind, pry resistance, etc.



▼ FUNCTIONS & FEATURES



VERSATILE CONTROL

Garage doors come standard with remote control; we can also install a digital code sensor for your garage door if desired. The sensor allows you to open and close your garage door by entering the code when you don't have the radio remote control.



EMERGENCY UNLOCKING

The manual controls can be unlocked whenever there is no electricity, allowing our doors to still open from the inside. Suppose there is no other way out of your garage. In that case, EU standards require this emergency unlocking feature, and our garage doors come standard with this feature.



OBSTACLE DETECTION

Installation of an obstacle detection system is supported. When the garage door runs, the infrared system will immediately stop it if it detects an object underneath, whether a child, a pet, a tool, or something else. It then runs in the opposite direction until it stops completely. The obstacle detection system is an optional accessory.



SAFETY BRAKE

When the door is malfunctioning or closing too fast, the anti-fall device (also called safety brake) in our rolling shutter door will start immediately, and it will issue a command through the electronic control system to make the mechanical steel shaft of the rolling shutter stop directly, thus preventing the rolling door from continuing to fall and avoid causing injury.



FLEXIBLE START/STOP

Support soft start and stop functions to smooth the running speed, slow down the impact of sudden start/stop on the motor and prolong the product's service life.



INDUCTION RECOGNITION

Support access card, NFC, and license plate recognition. When your car enters the induction range, the system automatically recognizes your vehicle and opens the entrance. The recognition system is easy to install—no need to bury the ground sensor coil, so it will not damage the ground.



MOVING ROLLERS

High-quality rollers protect the material from being crushed or damaged when closing the shutter and allow the garage door to remain stable on the running track.



SAFETY ANTI-PRY

There are no gaps between the rolling door bottom and ground articulation, and all garage doors are equipped with an anti-push device. These fully ensure the anti-pry function when the door is closed to ensure the car's safety.



LIGHT AND VENTILATION

People can customize "lighting + ventilation" slats according to individual needs. Therefore the garage receives a suitable amount of light to keep indoor ventilation fresh and prevent the basement garage from dampness and mold.



▼ ROLLING GARAGE DOOR



Rolling garage door is one of the most space-saving doors for your garage's interior. The aluminum roll-up door takes up no wall or ceiling space and ensures maximum space gain. The enclosed hood protects the roll-up from dirt, dust, and damage.

- ✓ Garage doors with durable aluminum rolled foam profiles and aluminum extruded profiles.
- ✓ No outward swing, more space in front of the garage
- ✓ Manufactured to the required dimensions to within millimeters
- ✓ Rolling shutter with individual slats
- ✓ Max. door width: 4500mm, Max. Door height: 4000mm
- ✓ CE-certified manufactured according to DIN-EN safety standards.

Application

STANDARD CONFIGURATION		OPTIONAL CONFIGURATION	
Door slats material	Aluminum alloy/steel + PVC lamination + PU foam	Viewing slats	Rectangle
Door slats parameters	77 x 18.6 mm (0.44/0.53 mm)	Anti-fall device	√
Drive method	Electric	Wireless remote control	Magic Sun
Roller brackets	√	Digital lock	√
Enclosed roll-up enclosure	√	Ventilation profiles	√
Standard colors	5 kinds	-	-
Sealing device	22mm bottom beam gasket	-	-
Obstacle detection	Infrared grating	-	-
Control method	Remote Control	-	-
Emergency unlocking	√	-	-

▼ ROLLING GARAGE DOOR

FAST OPENING AND CLOSING

With a fast opening speed, the rolling door can reach 1.0m/s, improving the passage efficiency, reducing the heat exchange inside and outside, and saving energy.

INSULATION DOOR SHEET

Double-layer aluminum or steel PU door sheet is available. PU door sheet has a firm structure, heat and sound insulation, and anti-theft performance. You can choose an optional aluminum frame window or ventilation door piece with a smooth surface and solid structure.

MULTI-DIRECTIONAL SAFETY

PROTECTION DEVICE

Reverse direction operation after the soft bottom edge meets the obstacle.

When a component fails, the control system immediately switches to point-action mode.

SLATS WITH WEAR-RESISTANT SURFACE

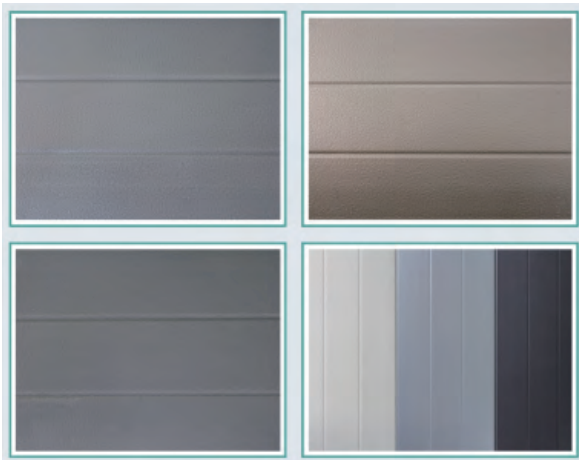
The surface of the rolling shutter profile adopts the PVC coating process, which is coated on the metal plate at high temperatures. And it has unique properties such as wear resistance, scratch resistance, and durability. Thus the slats can keep long-lasting beauty and durability.

OPENING METHODS

The electric opening method is provided as standard, which is suitable for a variety of sizes and usage scenarios and can also be matched with a variety of control methods.

LOW SPACE REQUIRED

The garage door installation requires a small height for the top beam and the minimum space required is only 350 mm in the lintel area. This leaves more usable space in the interior.



▼ SLIDING GARAGE DOOR



The side sliding garage door is an aluminum door that can be adapted to almost any building structure. It can even cope with huge garages with its double-door design. As a sideways-running door, it occupies only one wall of the garage. The ceiling and other divisions of the garage are left empty. Two independently programmable interfaces allow you to open the garage door only halfway or simultaneously, providing convenient usage patterns for both pedestrian and vehicular traffic.

- ✓ Durable extruded aluminum profile garage doors
- ✓ No outward swing, more space in front of the garage
- ✓ Manufactured to the required dimensions, accurate to within millimeters
- ✓ Door piece with separate slats
- ✓ Vertical profile alignment for high surface stability
- ✓ Single door opening width up to 6000 mm; double doors with extra large opening width up to 12000 mm
- ✓ CE certified, manufactured according to DIN-EN safety standards

Application

STANDARD CONFIGURATION		OPTIONAL CONFIGURATION	
Door slats material	Aluminum alloy	Digital lock	√
Door slats parameters	-	Wireless remote control	Magic Sun
Drive method	Electric	-	-
Sealing device	22mm bottom beam gasket	-	-
Obstacle detection	Infrared grating	-	-
Standard colors	5 kinds	-	-
Emergency unlocking	√	-	-
Control method	Remote Control	-	-

▼ SLIDING GARAGE DOOR

EXTRA LARGE OPENINGS

Under the condition of ensuring safety strength, it is specially built for the demand of large openings (opening limit: single door $\leq 6\text{m}$, double door $\leq 12\text{m}$), providing ample protection for four car parking spaces.

LOW TOP SPACE REQUIREMENTS

When we install a side sliding garage door, there is little need for space at the top. Only around 120 mm of space is needed in the lintel area which allows the garage door to fit into more different spaces.

SMALL LATERAL TURNING RADIUS

The side sliding garage door only requires a turning radius of approximately 130mm when encountering a turn to a corner.



FLOOR TRACK TYPES

Embedded floor track: embedded installation in the garage floor, no ground protrusion, smooth vehicle passage, need to be synchronized with the decoration.

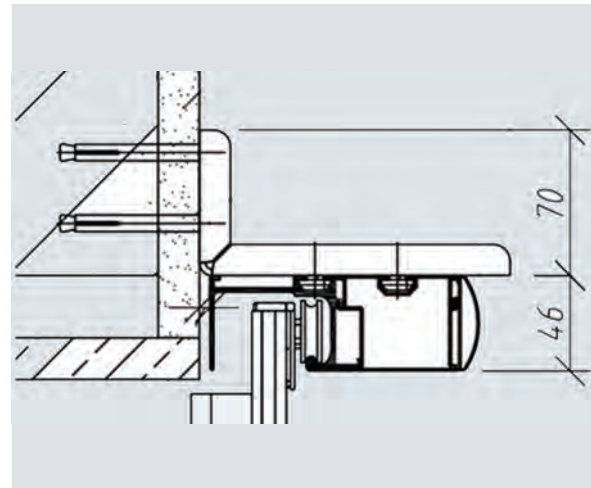
CONTROL MODE

With a wireless signal receiver for control, it is convenient and safe. In the event of a power failure, you can start the emergency manual control to ensure the regular use of the product.

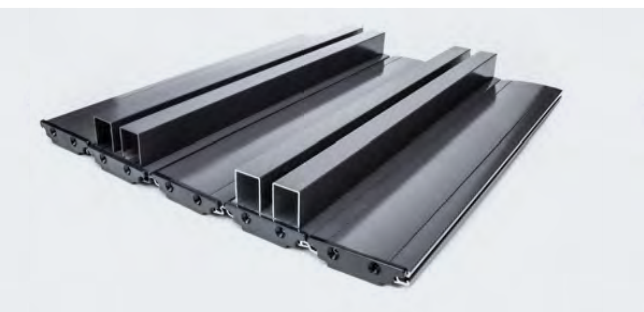
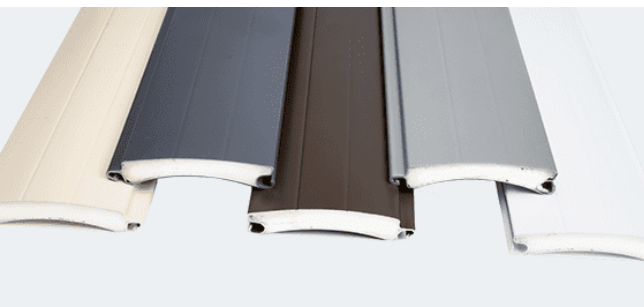
MULTI-DIRECTIONAL SAFETY PROTECTION DEVICE

Reverse direction operation after the soft bottom edge meets the obstacle.

When a component fails, the control system immediately switches to point-action mode.



▼ MATERIAL FEATURES



CHARACTERISTICS OF THE MATERIAL

Our modern garage door systems surprise with advanced technology, quality materials, and a high level of convenience built in as standard. Optional features and a wide range of colorways allow you to customize your garage door the way you want. Enjoy every departure and every return home.

Aluminum is the perfect choice for garage doors because it is durable, strong, and lightweight. And also, it runs smoothly and moves precisely. It is relatively unaffected by heat, cold, or weather and will last for many years.

Aluminum is light and robust, and durable. Relatively unaffected by rust, monsoons, and other harsh weather. The high-quality exterior surface can last for years without warping and fading. Thanks to our PVC lamination process, rolling and sliding garage doors never need to be repainted.

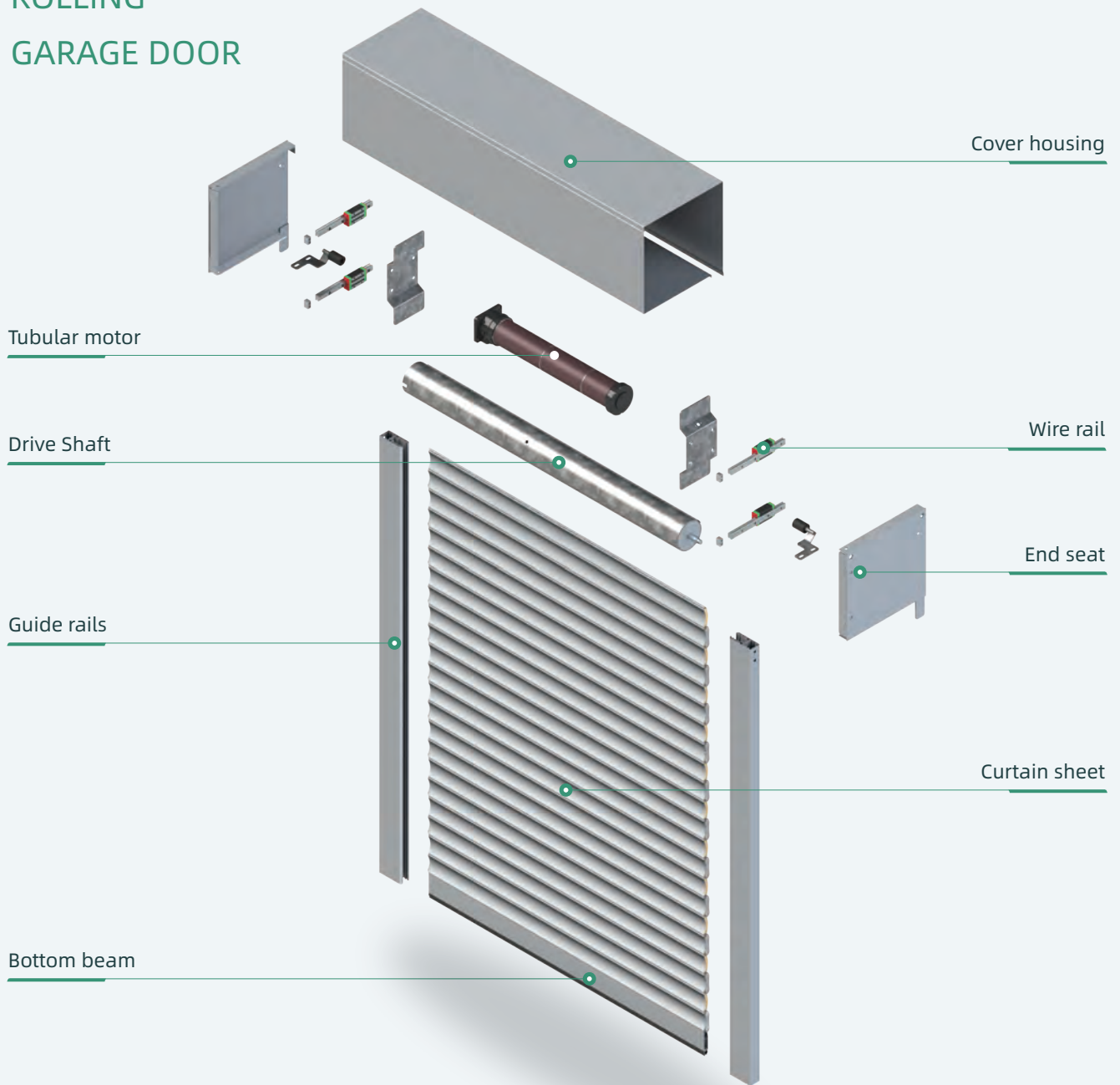
6060-T5 aluminum alloy profile is not easy to deform, easier to control, solid and lightweight, and has a long service life.

High-strength aluminum alloy and steel profiles rolled into shape, filled with high-density polyurethane foam fill inside. It has excellent functionality for safety, anti-pry, heat insulation, and noise reduction.

Aluminum is resistant to twisting and hardly expands under high-temperature conditions. More importantly, it is suitable for high-precision machining. Combined with advanced processing technology, this results in a garage door system with high added value.



ROLLING GARAGE DOOR



▼ DRIVE FEATURES



Features

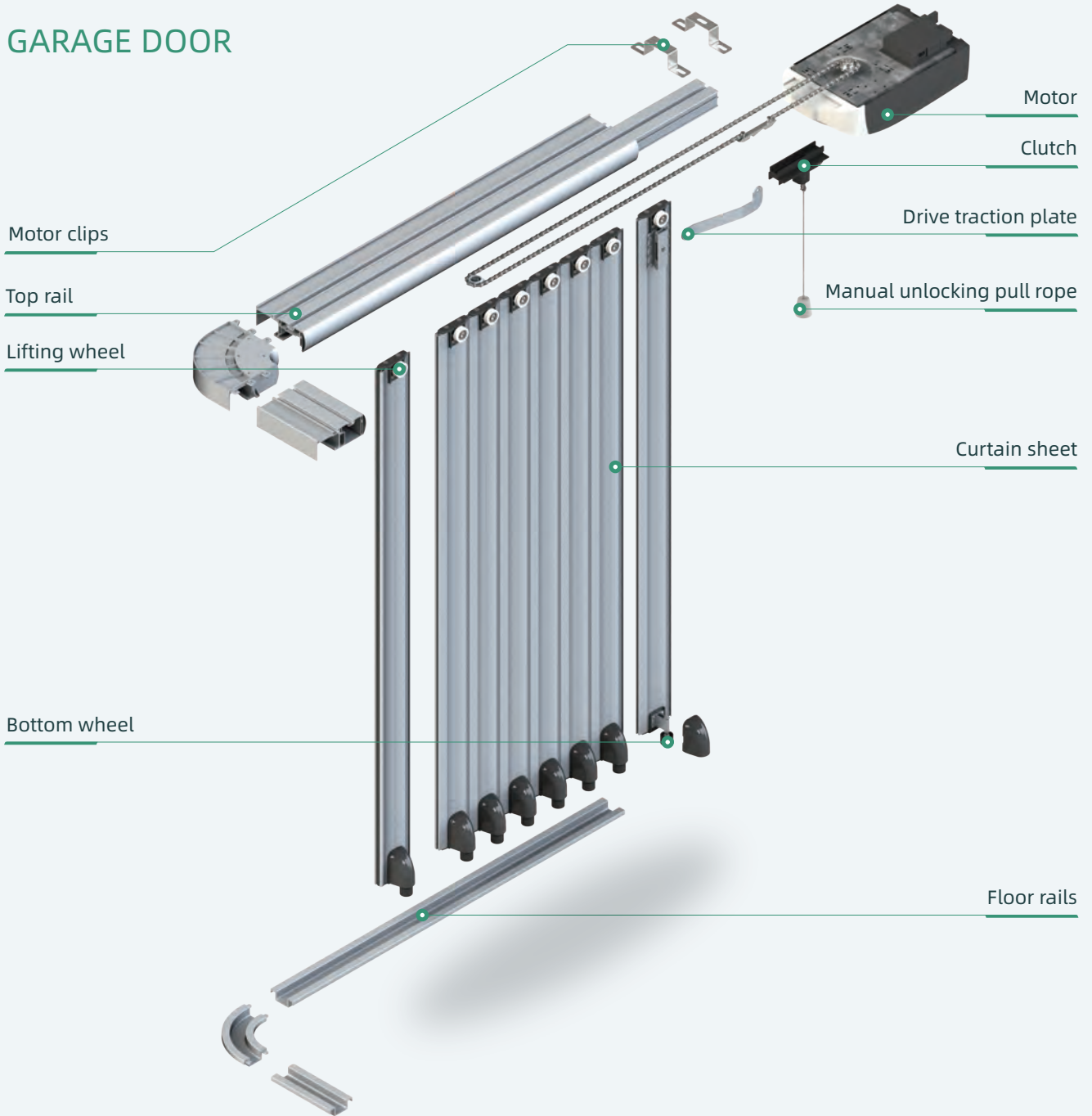
1. Motor - low noise operation when running, and the motor can start softly and stop slowly which protect the motor and extend the service life.
2. Digital display - digital window and menu display, with real-time code reflection and automatic monitoring of operation.
3. Password protection - procurement of rolling code bias code technology to prevent code theft, safe and reliable.
4. Power outage emergency - the drive rail is equipped with a clutch switch, when the power failure, it will pull down the rope, the limit can be manually opened and closed the door, and has a self-locking function.

Product Parameters

Input power	220VAC±10% 50-60HZ
Motor	24V DC
Transmitting frequency	433.92MHZ
Temperature	-2 to +50
Torque	800N
LED lighting time	3min

▼ PRODUCT STRUCTURES

SLIDING GARAGE DOOR



▼ DRIVE FEATURES

Doorman motor, which is professionally designed for garage doors, stable, durable and long-lasting operation.

Double insurance

Daily remote control, with wireless signal receiver for control, convenient and safe; in case of power failure, manual control can be unlocked to ensure the regular use of the product.

Quiet operation

Precision track system effectively reduces the noise of door operation, reduces the wear and tear of the door body, significantly increases the service life.



Product Parameters

Motor Parameters						
	600N	800N	1000N	1200N	1500N	1800N
Garage door area	< 8m ²	< 10m ²	< 12m ²	< 14m ²	< 18m ²	< 20m ²
Transformer power	60W	80W	100W	120W	150W	200W
Motor Power	24V/6N	24V/7N	24V/8N	24V/8N	24V/8N	24V/8N
Rated voltage	110V or 220V	110V or 220V	110V or 220V	110V or 220V	110V or 220V	110V or 220V
Rated current	2.5A	3.3A	4.1A	5A	6.25A	8.33A
Fastest speed	130-150mm/s	130-150mm/s	130-150mm/s	130-150mm/s	130-150mm/s	130-150mm/s
Operating temperature range	-20°C~+50°C	-20°C~+50°C	-20°C~+50°C	-20°C~+50°C	-20°C~+50°C	-20°C~+50°C
Safety Protection	Motor has a rebound function when encountered					

▼ CONVENIENT CONTROL



Wireless wall switch

Doorman motor, which is professionally designed for garage doors, stable, durable and long-lasting operation. SAW locked sending frequency, precise control; equipped with CR2430 battery, ultra-long standby.



Keypad code lock

Designed for automatic door remote control, enter the code combination before activating the control system.



HMA remote control

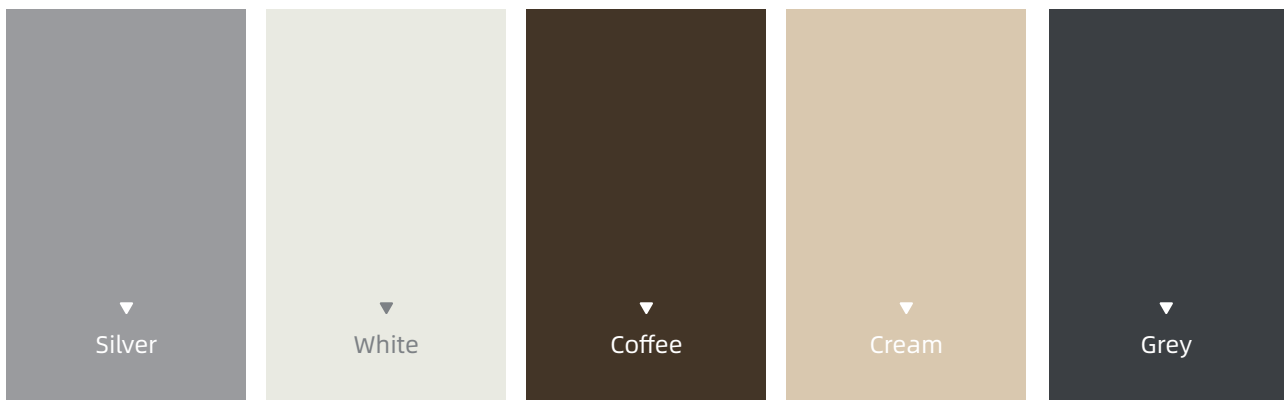
Intelligent remote control with mirror light plating surface and invisible buttons; pure simplicity and gentle touch feeling.

▼ RICH COLORS

With a wide range of colors to choose from, you can select a uniform color or individual colors for the blades and rails depending on your facade.

BASIC COLOR

Silver, white, coffee, cream, and grey, 5 standard colors constitute the basic color selection of the garage doors. A selection of standard colors to meet the most popular color trends.



PERSONALIZED COLOR

Customized colorful colors to meet all your unique color needs.



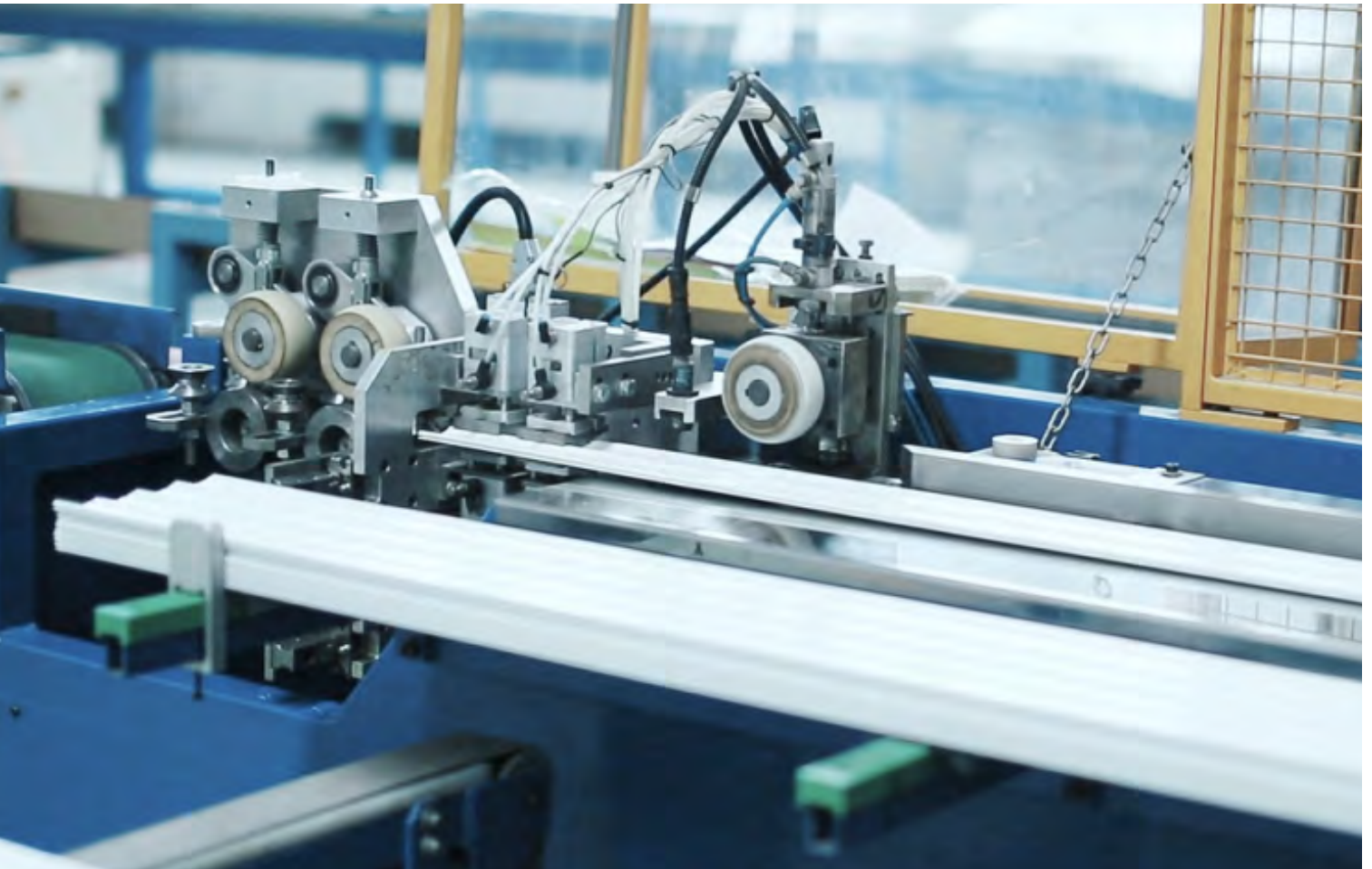
▼ QUALITY ASSURANCE



- Five years warranty for the condition under regular use and maintenance and without human damage;
- Five years warranty for control system and remote control device ;
- Provide five years the quality assurance of aluminum alloy materials do not fade.

EXCELLENT CRAFTSMANSHIP

Each production shift, each batch of materials has a self-inspection sample to ensure 100% quality inspection and comply with the EU standards. Each product will be the same.



ULEPANDA

ULE PANDA

Craft by Nanjing Jinxing Yu
Energy Saving Technology Co., Ltd

Address: 6 Liyuan Rd, Pukou District, Nanjing, Jiangsu, China, 211806

Email: Info.ulepanda@gmail.com

www.ulepanda.com

