



ROLLER SHUTTER PROFILE



Foam-filled Slats For Roller Shutter

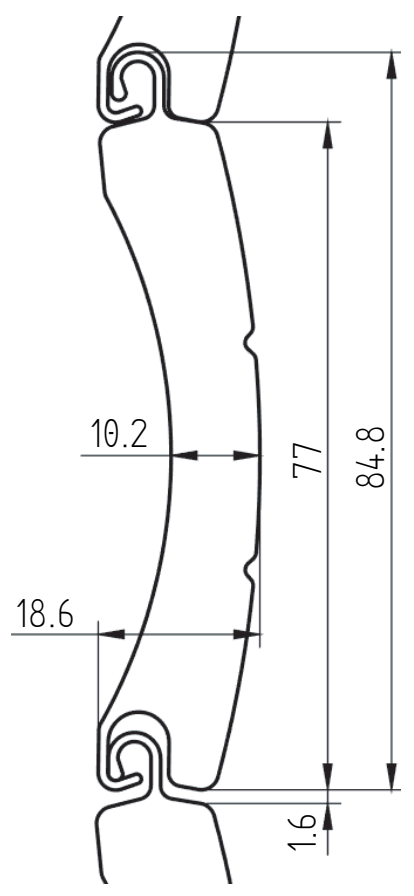
ULEPANDA

▼ 6 Product Features

- Sun-shading
- Sound insulation
- Wind-proof and dust-proof
- Ventilation and dimming
- Cold proof
- Privacy and security



▼ 77mm*0.58mm PVC Coating Steel Slats



Technical Specifications

Size	77mm
Nominal Thickness	18.6mm
Plate Thickness	0.58mm
Weight	840g/m, 10.92kg/m ²
Lighting Hole Size	-
Pu Density	60-65kg/m ³
Maximum Shutter Width	≤6.0m
Maximum Shutter Height	≤4.2m
Slats Per Meter	13

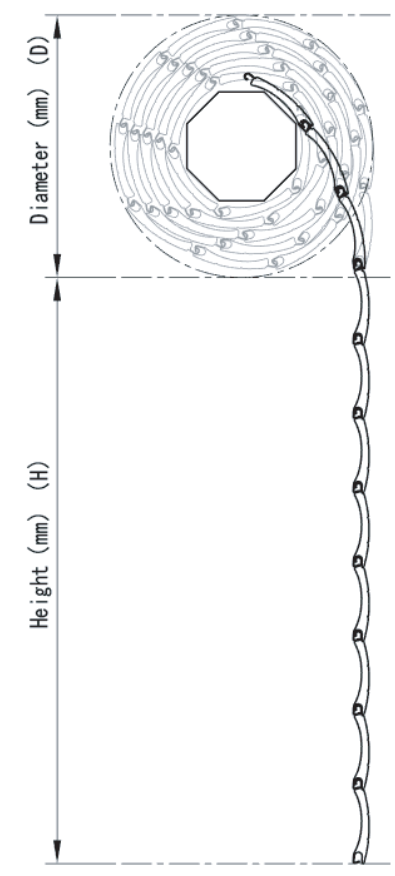
Packing Data

Length	3m-7.5m
Slats Per Package	6 Pcs



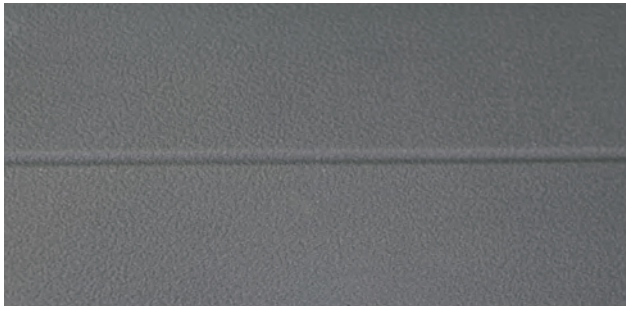
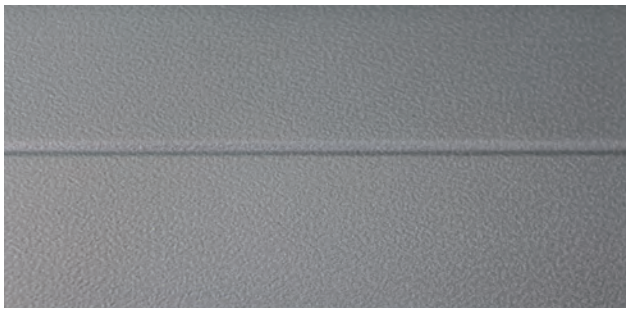
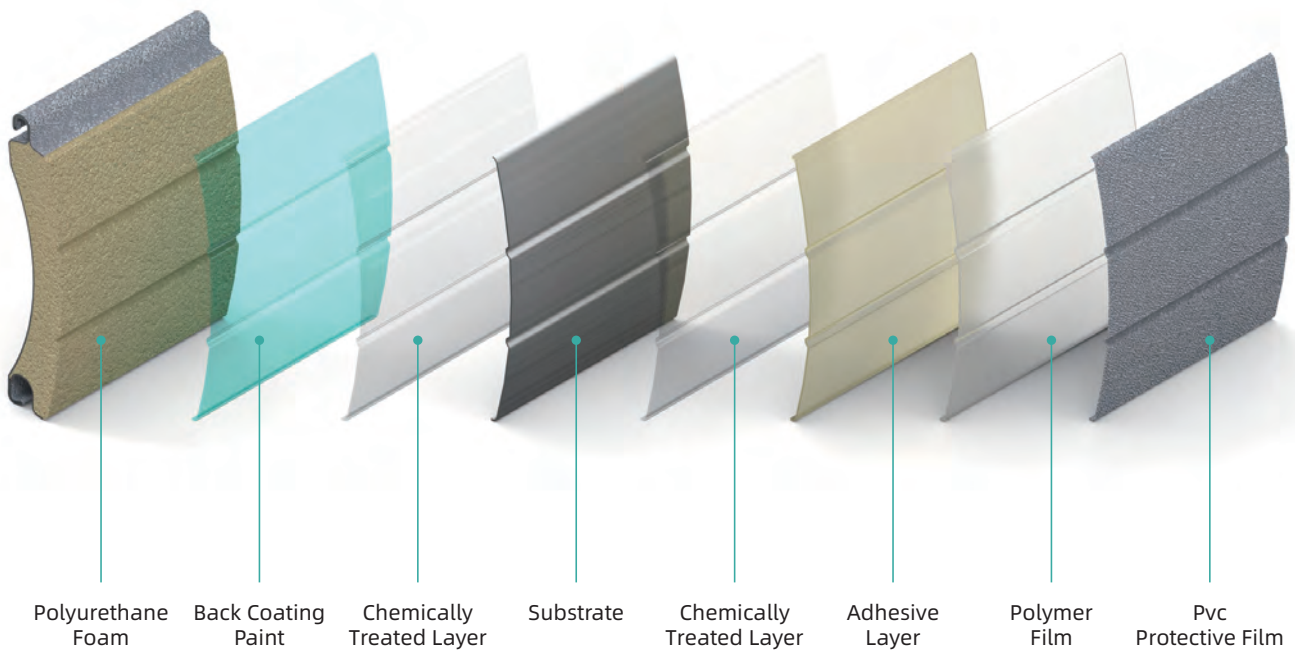
Diameters of winding

Height (mm)	Diameter	
	φ70	φ89
1000	180	200
1200	200	200
1400	210	215
1600	220	230
1800	235	230
2000	235	245
2200	235	250
2400	255	255
2600	265	275
2800	265	275
3000	270	285
3200	285	285
3400	300	305
3600	300	305
3800	300	310
4000	315	320



▼ Durable

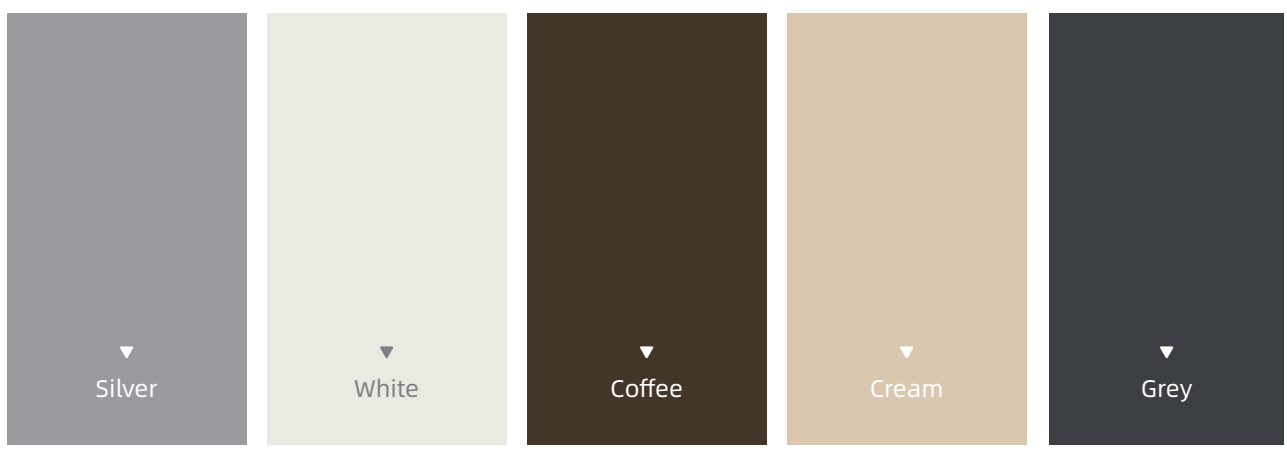
PVC lamination process is used on the surface of the rolling shutter door sheet. PVC lamination process is a special treatment of PVC film by high temperature on the metal plate, with wear-resistant, scratch-resistant, strong adhesion and other unique properties, to achieve a combination of beauty and durability in one of the uses of value.



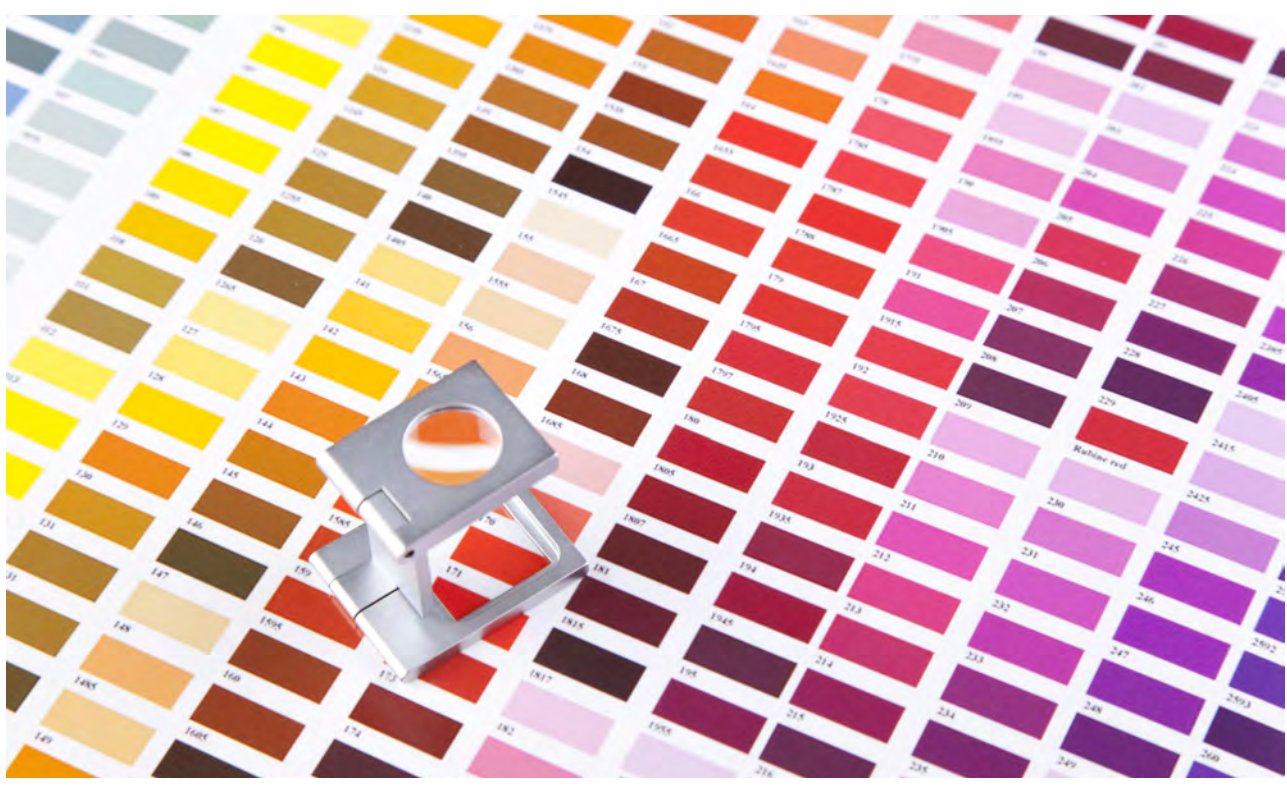
▼ RICH COLORS

For all the visible surfaces of our products made of aluminum, we offer five common color combinations or customized by RAL colors. The color scheme will always match your building space perfectly.

BASIC COLOR



PERSONALIZED COLOR



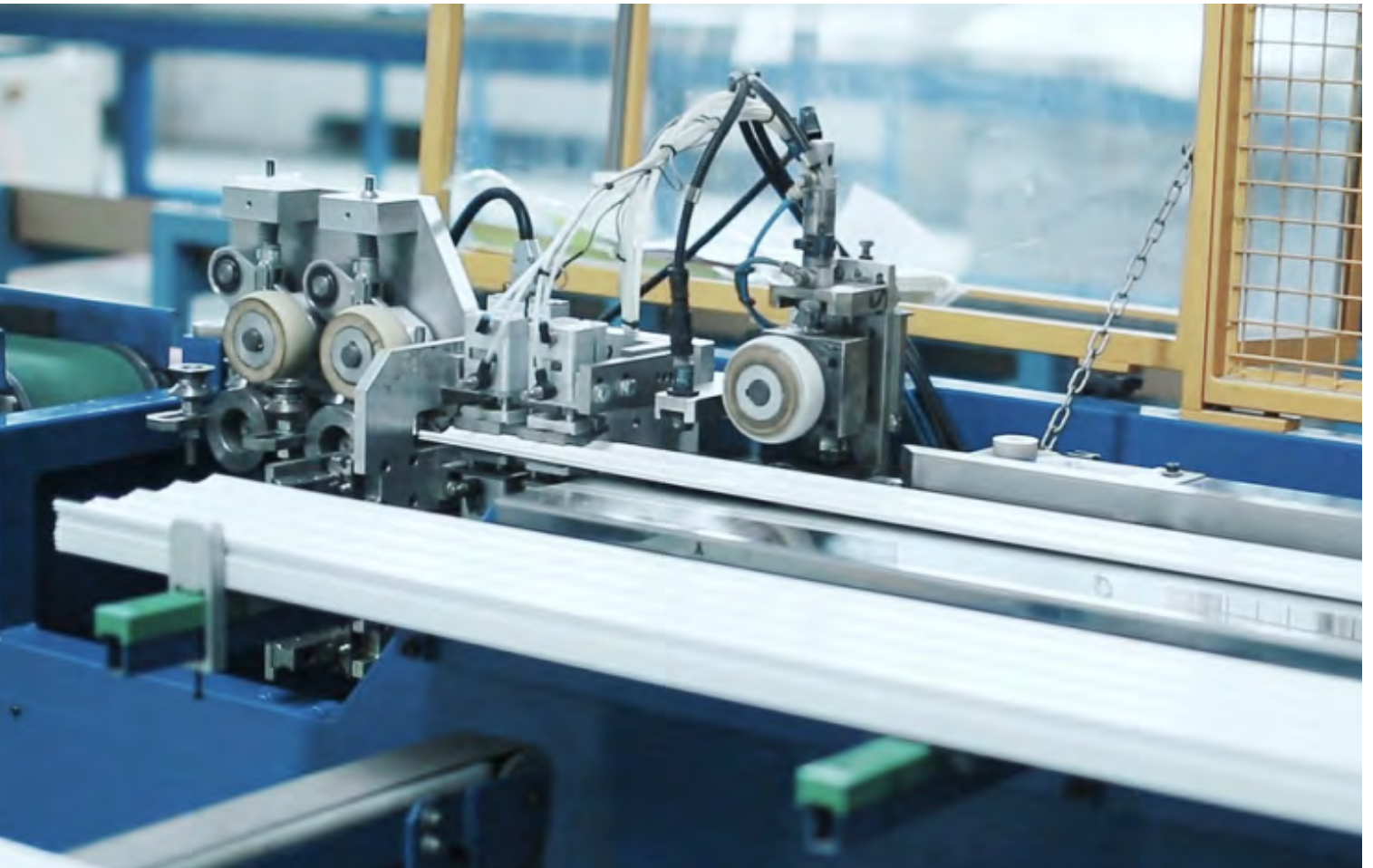
▼ QUALITY ASSURANCE



- Five years warranty for the condition under regular use and maintenance and without human damage;
- Provide five years the quality assurance of aluminum alloy materials do not fade.

EXCELLENT CRAFTSMANSHIP

Imported from Italy production line, each production shift, each batch of materials has a self-inspection sample to ensure 100% quality inspection and comply with the EU standards. Each product will be the same.



ULEPANDA

ULE PANDA

Craft by Nanjing Jinxing Yu
Energy Saving Technology Co., Ltd

Address: 6 Liyuan Rd, Pukou District, Nanjing, Jiangsu, China, 211806

Email: info@ulepanda.com

www.ulepanda.com

