



HORIZONTAL ZIP SCREEN



Sunshade & Insulation
Optimal Light & Thermal Control

ULEPANDA



**Solar Control,
Smooth Operation,
Versatile Fit**

▼ ULEPANDA SOLUTION

Horizontal ZIP Screen system featuring high-performance outdoor fabrics and specialized drive technology, this system offers precision climate control. It blocks summer heat and glare while optimizing winter solar gain, significantly enhancing year-round spatial comfort.

Engineered for versatility, the system supports horizontal, inclined, and vertical installations. It ensures a perfectly tensioned fabric finish and long-term operational reliability across diverse architectural environments.



▼ FUNCTIONS & APPLICATIONS

1 | SKYLIGHTS FOR COMMERCIAL & HOSPITALITY SPACES

Optimizing light and thermal performance to enhance occupant comfort and energy efficiency.



2 | PRIVATE TERRACES & GARDENS

Extending your outdoor living space and maximizing your time spent enjoying nature.



3 | COMMERCIAL SPACES: CAFES & RESTAURANTS

Expanding seating capacity and creating a premium outdoor dining experience.

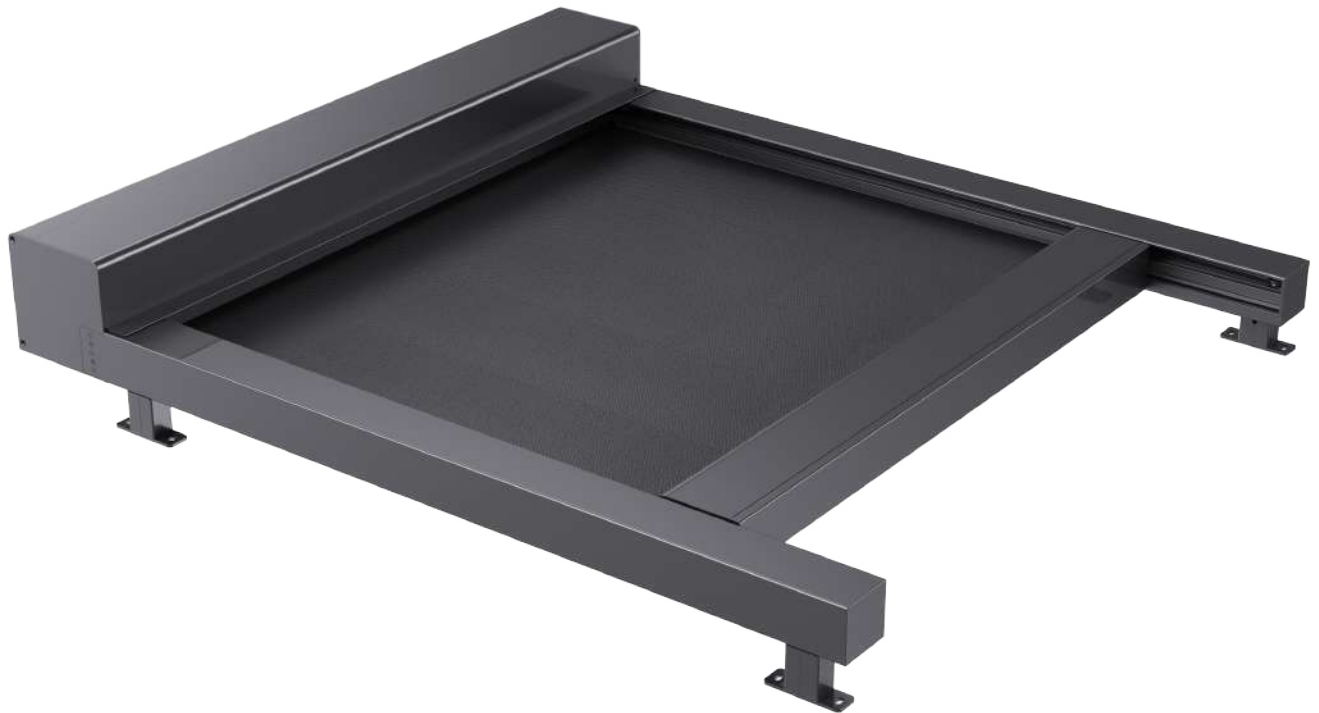


4 | RESIDENTIAL GLASS ROOFS & SKYLIGHTS

Mitigating solar heat gain and direct glare to enhance comfort and improve energy efficiency.



▼ PRODUCT FEATURES



▼ ADAPTIVE CLIMATE REGULATION

Dynamic switching between summer shading and winter solar gain. The system opens and closes flexibly according to seasonal changes, balancing energy efficiency with year-round occupant comfort.

▼ HIGH-PERFORMANCE SOLAR PROTECTION

Effectively blocks direct sunlight to prevent the "greenhouse effect" under glass roofs. It significantly mitigates indoor overheating, reducing cooling loads and energy expenditure.

▼ SOFT NATURAL LIGHTING

Filters and distributes natural light to eliminate glare while maintaining brightness. The system allows for precise light adjustment to create a refined and comfortable ambient atmosphere.



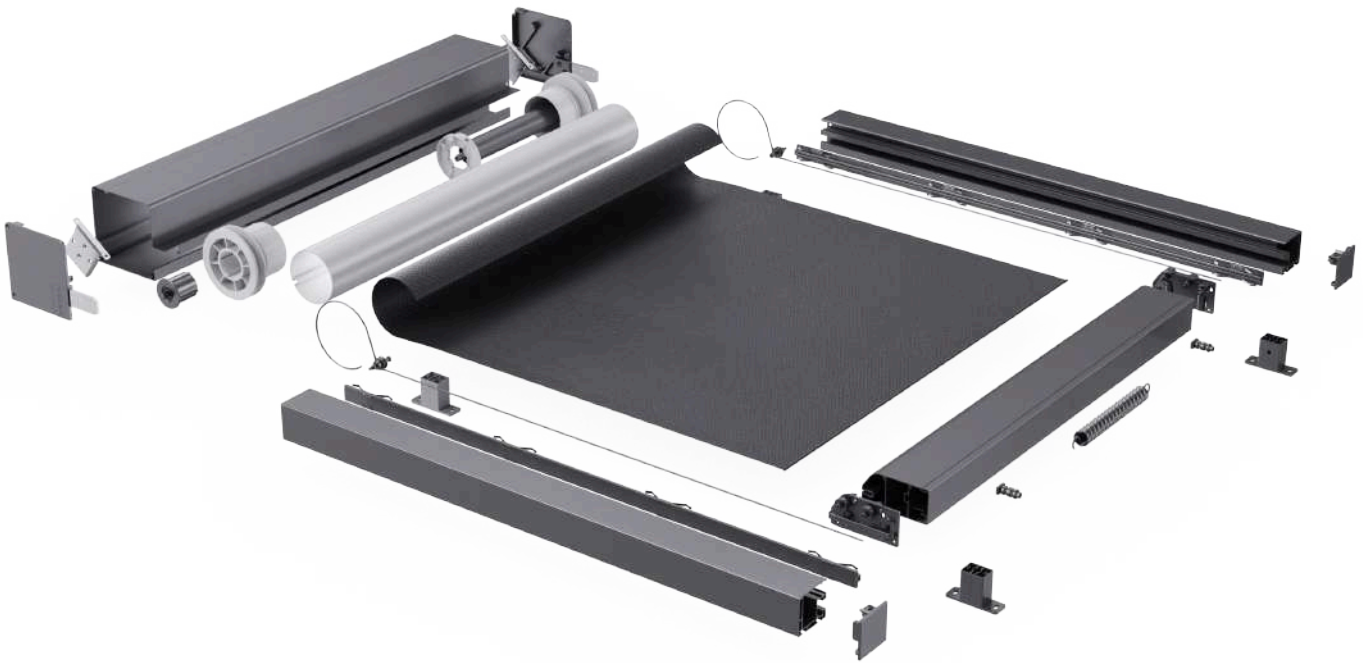
▼ WEATHER RESISTANCE & RELIABILITY

Constructed with premium outdoor-rated materials featuring superior UV and aging resistance. The system is engineered for long-term stability and reliable performance in demanding environments.

▼ INTELLIGENT OPERATION

Supports advanced intelligent control with smooth, responsive movement. Designed for high-frequency use in public and commercial spaces, the system ensures low-noise operation and exceptional stability.

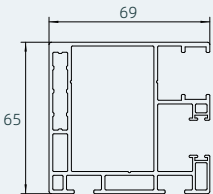
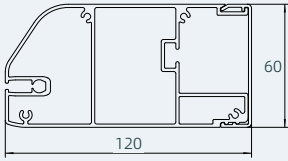
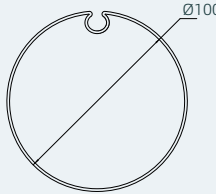
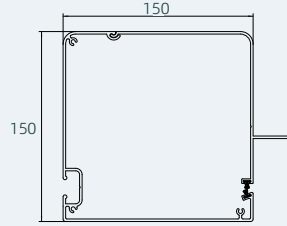
▼ PRODUCT STRUCTURE



PRODUCT SPECIFICATIONS

Color	White	Grey
Material	Aluminum Alloy	
Surface Solution	Powder Coating	
Control Mode	Wired /Remote/ Intelligent Control	

PROFILE DIMENSIONS (mm):

			
Guide	Bottom Beam	Drive Shaft	Housing

APPLICATION DIMENSIONS

Product Series	Width (mm)	Height (mm)	Remarks
JH-ZIP-150	1000 - 3200	≤ 6000	Seamless Fabric
	3200 - 5000	≤ 3000	

Notes: *The specifications listed above refer to the size range for a single-unit configuration.

*Products exceeding the dimensions in this table require custom engineering. Please consult the manufacturer for a detailed technical solution.

▼ FABRIC FEATURES



- ✔ Designed for full-area, all-weather applications, with tensile strength exceeding 2000 N, providing excellent resistance to strong winds and impact loads.
- ✔ Color fastness rated at Grade 8, with resistance to acids and alkalis, ensuring over 20 years of durability in harsh outdoor environments.
- ✔ Manufactured using Spanish-imported impulse welding equipment, delivering superior welding performance with smooth and precise seams.
- ✔ The fabric remains consistently tensioned and flat, offering dimensional stability and long-term durability.
- ✔ Available in multiple color options, with easy installation and disassembly.

Composition	42% Fiberglass + 58% PVC
Openness Factor	4%
Thickness	0.75mm
Width	285/320cm
Tensile Strength	Warp > 2200N; Weft > 2000N
Fire Classification	Grade B1 (Flame Retardant)
Antibacterial Performance	ASTM E2180 Testing – Eliminates over 99% of bacteria
UV Protection	96%
Color Fastness to Light	ISO 105 B02 Grade 7/8
Eco-Certifications	GREENGUARD, Environmental Product Declaration (EPD) Certified

▼ SYSTEM ADVANTAGES

▼ High-Performance Single-Motor Central Drive | Efficient & Robust Structure

Utilizing a single-motor centralized drive configuration simplifies the transmission structure. The system is engineered with design redundancy and collaborative error correction to ensure superior reliability.

Equipped with a specialized heavy-duty motor, the system delivers stable output and long-term durability. It ensures smooth operation and rapid response while significantly minimizing life-cycle maintenance costs.

Motor Model	Altus 50 40/17 RTS 1049582	Rated Speed	17rpm
Rated Torque	40Nm	Continuous Operating Time	4min
Rated Voltage	220V	Protection Rating	IP44
Rated Power	270W	Product Certifications	CE、CCC

▼ Bottom Bar Tension Compensation System | Long-Lasting Fabric Tension & Flatness

The integrated spring compensation mechanism automatically adjusts to fabric tension fluctuations, maintaining a crisp, flat appearance at all times. By effectively mitigating material fatigue, this system enhances overall structural stability and extends the service life of the fabric.

▼ Dual-Layer Lateral Guide Rails | Stable & Wind-Resistant Operation

The dual-layer lateral guide rail design significantly improves guiding precision and wind load resistance. It effectively suppresses lateral fabric displacement, ensuring the opening and closing process remains smooth, silent, and stable even under challenging conditions.

▼ Multi-Angle Installation | Versatile Architectural Adaptation

The system is engineered for seamless integration across horizontal, inclined, and vertical orientations. It maintains optimal fabric tension regardless of the installation angle, providing the flexibility required to meet diverse and complex architectural design requirements.

▼ CONTROL MODE

▼ Wired Control

The shading system is operated via a wired wall switch, installed in a standard 86-type wall box for stable and reliable performance. Each system can be controlled independently, enabling precise adjustment of opening positions.

Max. Input: AC 250V / 6A

Product Dimensions: 86 × 86 mm (L × W)



Single-Control



Dual-Control

▼ Remote Control

Wireless remote control operation is available through either a handheld transmitter or a wall-mounted radio switch. The system supports opening and closing control of the shading roof, with both single-channel and multi-channel options available for flexible and convenient operation.

Transmission Frequency: 433.42 MHz

Transmission Range: 200 m (outdoor) / 35 m (indoor)



5-Channel
Transmitter



4-Channel
Wall-Mounted Transmitter

▼ Smart Control

For Commercial Buildings: Based on an intelligent control system, the shading equipment can achieve fully automated operation. The system can be integrated with sunlight, wind, and rain sensors to automatically adjust operating conditions in real time. It supports programmable settings, scheduled operation, and manual/automatic mode switching, while also enabling integration with building management systems (BMS) for coordinated control with HVAC and lighting systems.

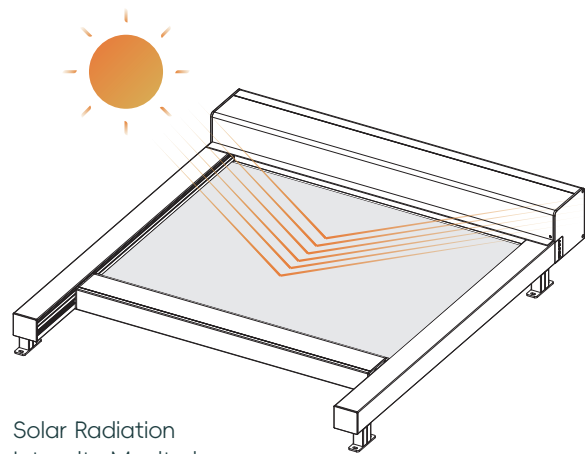
For Residential Buildings: Compatible with smart home systems, enabling APP or voice control. Functions include scheduled operation, safety protection, and scene mode settings, delivering a more convenient and comfortable living experience.



Wind-Sun-Rain Sensor



Smart Control Panel



Solar Radiation
Intensity Monitoring



ULEPANDA

ULE PANDA

Craft by Nanjing Jinxing Yu
Energy Saving Technology Co., Ltd

China Address: 6 Liyuan Rd, Pukou District, Nanjing, Jiangsu, China, 211806

Email: Info.ulepanda@gmail.com

Serbia Address: Kninska 31a 11309 Leštane Beograd

Email: rico@ulepanda.com

www.ulepanda.com

